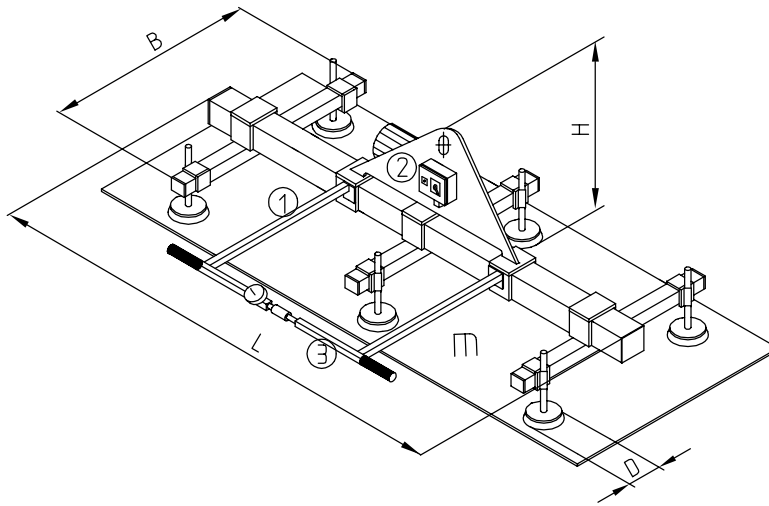
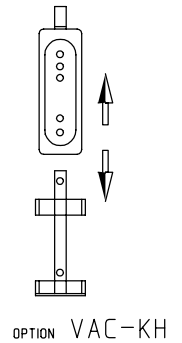
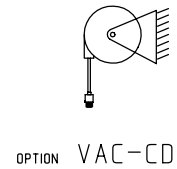
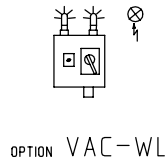
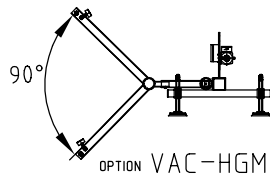
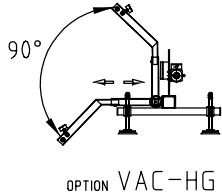




Vacuum hefunits
 Vakuum-hebeerate
 Vacuum hoistingunits
 Unité de levage a ventouses



TYPE TYP TYPE TYPE	m	L	B	D	H
VACU-15/6x110	150	1800	1000	110	750
VACU-25/4x170	250	1800	1000	170	720
VACU-35/6x160	350	1800	1000	160	720
VACU-60/4x250	600	1800	1000	250	800

TYPE AANDUIDING, TYPBEZEICHNUNG, TYPE INDICATION, TYPE DESCRIPTION :

VACU-35/6X160

AANTAL EN DIAMETER ZUIGNAP, ANZAHL UND DIAMETER SAUGPLATTE,
 NUMBER OF AND AXIS SUCTIONCUP, NOMBRE ET DIAMETRE DES VENTOUSES.
 BELASTING, BELASTUNG, CAPACITY, CHARGE.
 UITVOERING, AUSFUHRUNG, SYSTEM, TYPE.

m=kg $\overbrace{\hspace{1cm}}^{\text{mm}}$
 Alterations reserved

10D50102